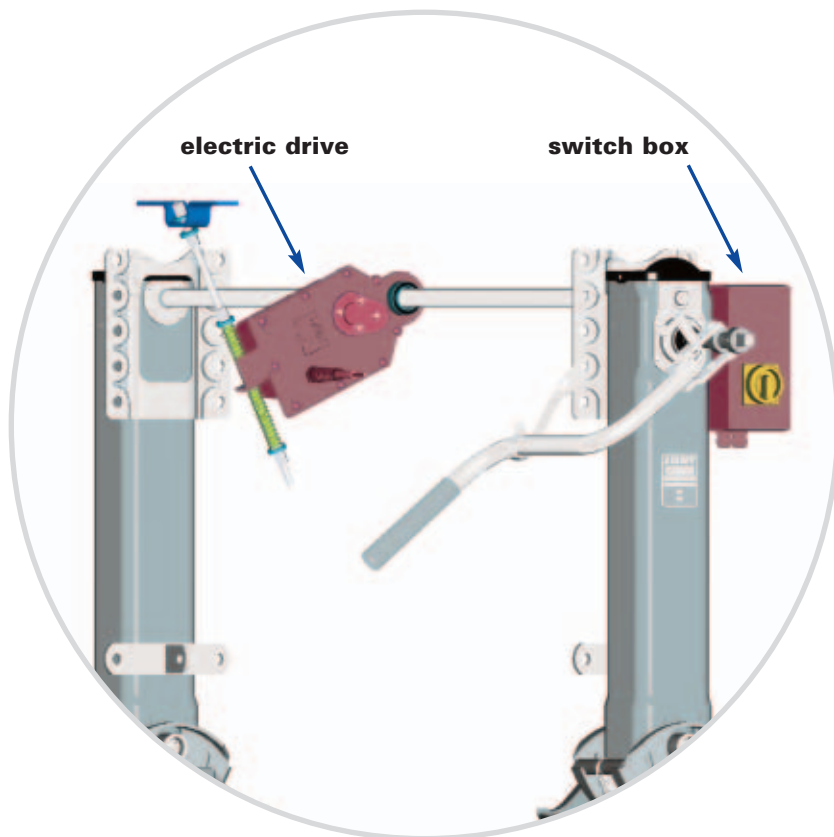


Easy Drive



www.jost-world.com

Ease of operation and safety on the highest level

- Stops automatically on ground contact and when fully wound in
- Ideal for operation in cramped parking bays and for frequent coupling and uncoupling
- Can be subsequently installed on all JOST E-series and Modul legs (other models on request)
- Manual operations possible with crank kit
- Saves time and effort (Health & Safety)
- Switch box available in 2 versions: for normal and very low ambient temperature

JOST

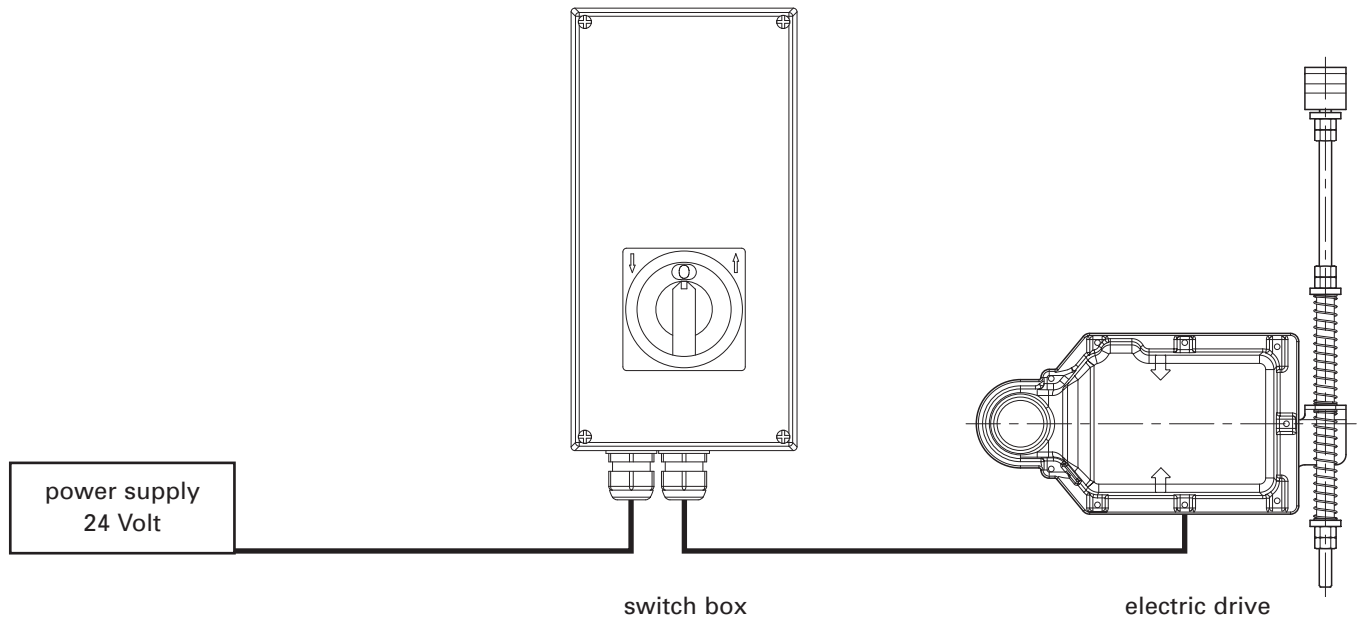
Easy Drive

Technical data

Power supply 24 Volt

Protection code: electric drive = IP 5K4
switch box = IP 65

Not suitable to lift loaden trailers



Selection table / Versions available

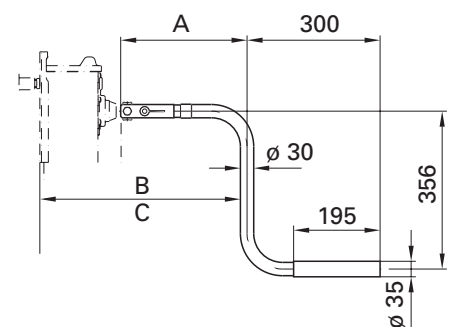
Description	Remark	Order No.
electric drive standard		JS 7000000
electric drive with crank kit for manual operation	with crank JS U23	JS 7003000
switch box for standard bus bar	for ambient temperature to -10°C (10A fuse)	JS 7005000*
switch box for special bus bar	for ambient temperature to -25°C (16A fuse), if necessary special cable to the tractor unit may be required	JS 7005100*

*incl. 5 m cable

Accessories (can be ardered separately)

Description	A	B (Low gear)	C (High gear)	Order No.
crank shaft	-	-	-	JS E7007000*
special crank handle	385	634	653	JS U21
	405	654	673	JS U22
	450	699	718	JS U23
	505	754	773	JS U24
	550	799	818	JS U25

*crank kit for modul / please order components separately



More information regarding our range of products can be found at www.jost-world.com

JOOST

ROCKINGER

**REGENSBURGER
ZUGGABEL**