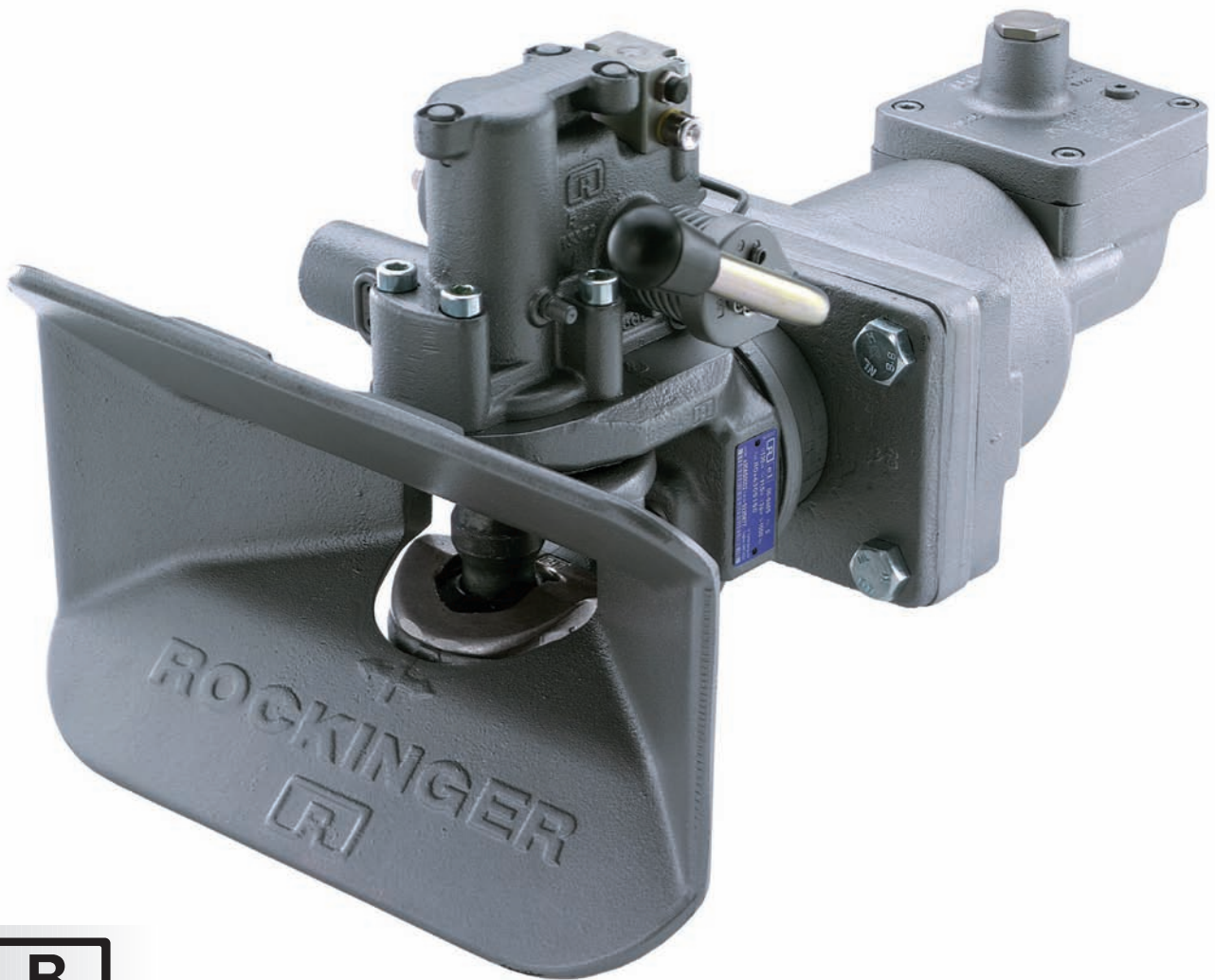


# RO★400 / RO★430



[www.jost-world.com](http://www.jost-world.com)

## 40 mm towing hitch for universal use

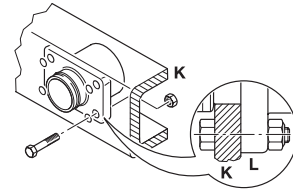
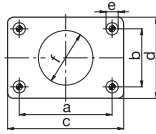
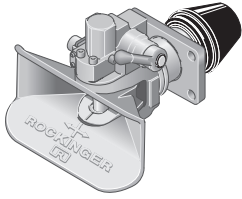
- modular upgrades available
- also available with new 2-sensor remote display
- slack-free comfort model (RO★430)
- Load values  
D value = up to 130 kN  
V value = up to 36 kN
- easy to repair thanks to the ROCKINGER modular system
- weight-optimised

**JOST**

# RO★400 / RO★430

## Technical Specification

RO★400, 40mm towing hitch, 94/20/EC approval

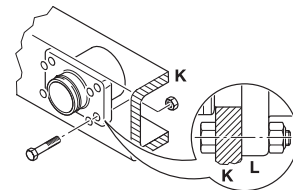
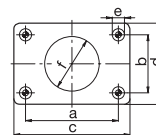
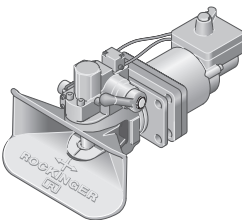


	a (mm)	b (mm)	c (mm)	d (mm)	e (mm)	f (mm)		K (mm)	K (mm)
	135	120,0	55,0	155,0	90,0	15,0		11-32	max. 32
	145	140,0	80,0	180,0	120,0	17,0		11-35	max. 35
	150	160,0	100,0	200,0	140,0	21,0		11-35	max. 35

										e1	
	A	B	(mm)	D (kN)	Dc (kN)	S (kg)	V (kN)	(kg)			
RO400A36000	135	120 x 55	70	70,0	700	24,0	30,0	00-0352			
RO400A36000	135	120 x 55	70	70,0	500	26,4	30,0	00-0352			
RO400B36000	135	120 x 55	70	70,0	700	24,0	30,0	00-0352			
RO400B36000	135	120 x 55	70	70,0	500	26,4	30,0	00-0352			
RO400A46000	145	140 x 80	100	91,5	1000	31,2	34,0	00-0351			
RO400B46000	145	140 x 80	100	91,5	1000	31,2	34,0	00-0351			
RO400A51000	150	160 x 100	130	90,0	1000	35,0	35,0	00-0350			
RO400B51000	150	160 x 100	130	90,0	1000	35,0	35,0	00-0350			
RO400A51200	150	160 x 100	130	90,0	1000	35,0	35,0	00-0350		x	

## Technical Specification

RO★430, 40mm Comfort hitch, 94/20/EC approval



	a (mm)	b (mm)	c (mm)	d (mm)	e (mm)	f (mm)		K (mm)	K (mm)
	145	140,0	80,0	180,0	120,0	17,0		11-28	max. 28
	150	160,0	100,0	200,0	140,0	21,0		11-28	max. 28

										e1
	A	B	(mm)	D (kN)	Dc (kN)	S (kg)	V (kN)	(kg)		
RO430A45001	145	140 x 80	100	91,5	1000	36	51,0	00-0406		
RO430B45001	145	140 x 80	100	91,5	1000	36	51,0	00-0406		
RO430A50001	150	160 x 100	130	91,5	1000	36	52,0	00-0405		
RO430B50001	150	160 x 100	130	91,5	1000	36	52,0	00-0405		

More information regarding our range of products can be found at [www.jost-world.com](http://www.jost-world.com)

**JOST**

