



ROCKINGER

Montage- und Betriebsanleitung

D

Installation and operating instructions

GB

Instructions de montage et d'utilisation

F

Istruzioni per il montaggio e la manutenzione

I

Member of JOST-World

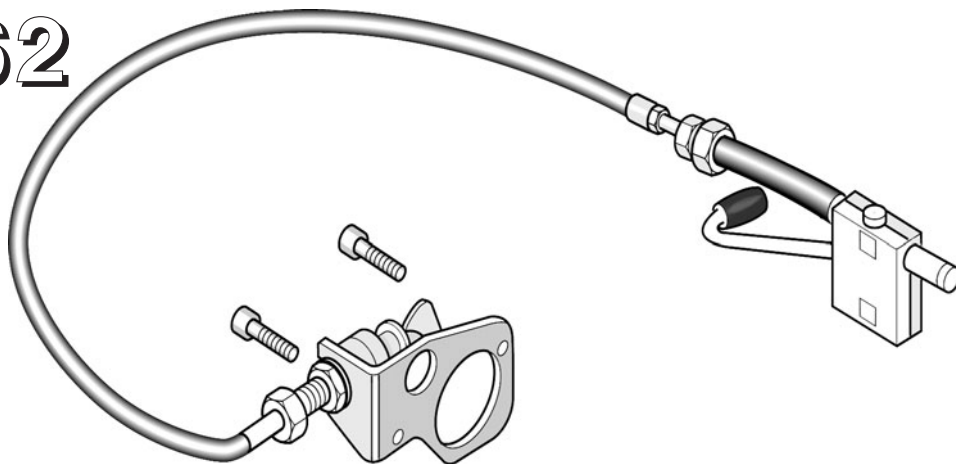
ROE 70962

Aufrüstsatz mechanische Fernbedienung

Upgrade kit mechanical remote control

Kit d'équipement commande à distance mécanique

Kit complementare meccanico l'apertura del gancio a distanza



**ROE 70962
mechanical remote control**

for Series

RO*400, RO*430, RO*460

RO*500, RO*530, RO*560



The mechanical remote control must be installed by authorised personnel!

Read these instructions carefully before fitting!

Official note

When fitting the mechanical remote control, the regulations for fitting mechanical fastening systems in accordance with Appendix VII of Directive 94/20/EC must be observed.

Subject to technical changes without prior notice

1. Mounting 12 – 17

Before Mounting 13

Mounting 14

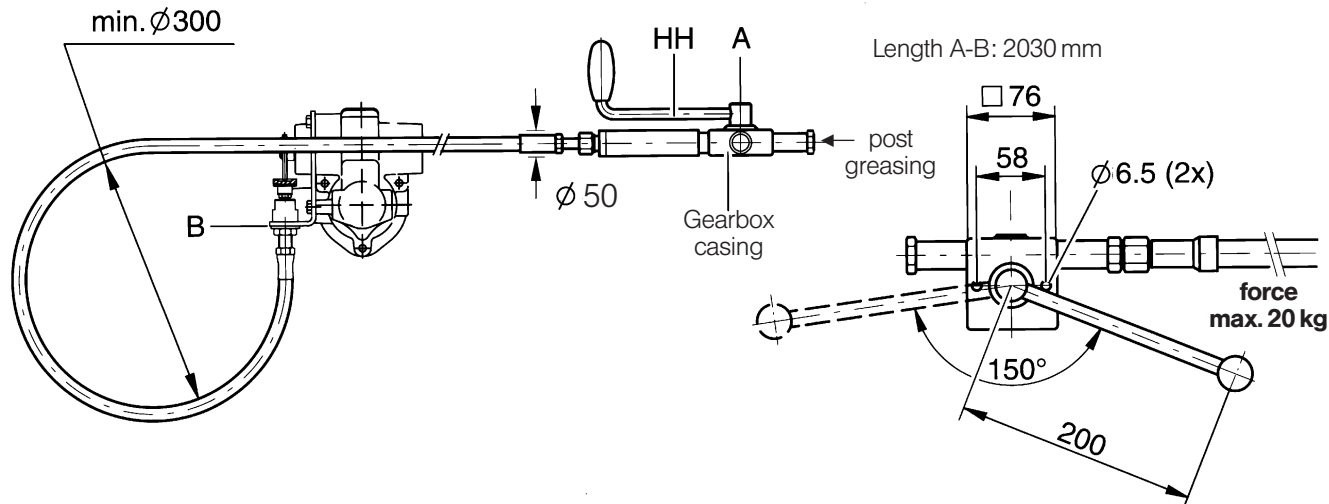
Mounting for types RO*500 15
(technical revision 0)

Mounting for types 16
RO*400, RO*430, RO*460,
RO*500 (from technical revision 1 to 2)
RO*530, RO*560

Mounting for types RO*500 17
(from technical revision 3)

2. Further mounting procedure 18





Before Mounting

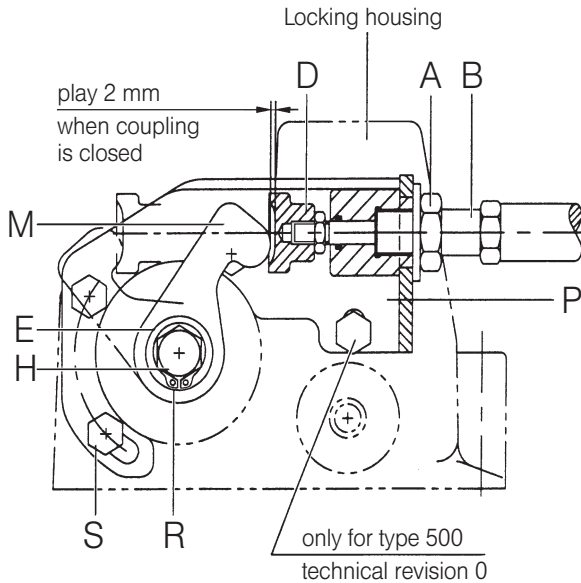
Note: When mounting servicing or repairing the coupling, any local regulations – together with the technical instructions issued by ROCKINGER and the vehicle manufacturer – must be observed. There must be sufficient clearance that the coupling head can rotate axially through $\pm 25^\circ$.

Lay the Bowden line such that it is not damaged if the trailer coupling travels axially up to $\pm 30^\circ$, ensuring a minimum radius of 150 mm (see figure). Avoid places where chafing can occur!

An opening of at least 50 mm is necessary in any dividing walls to enable the Bowden line to be fitted (the vehicle manufacturer must be consulted on any modification of the chassis).

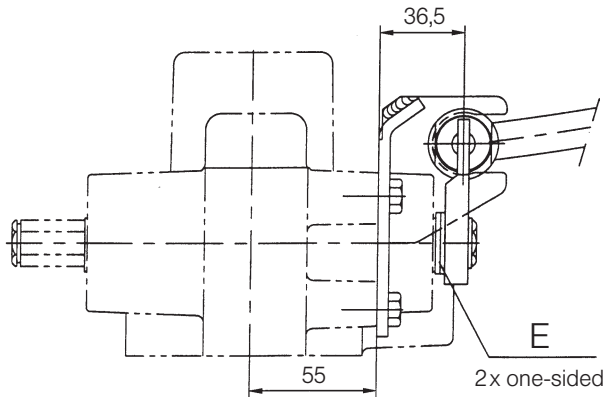
The actuator hand lever (**HH**) must be accessible from outside and fitted so that every position permits a clearance of at least 100 mm towards other components.





Mounting

- Insert Bowden line through the eventually available chassis bore.
- Mount actuator unit on vehicle using two M6 screws and self-locking nuts in relevant bores (see hole pattern) on vehicle, ensuring appropriate clearance, as specified above.
- Fit mounting place **(P)** to bores in locking housing (tightening torque 25 Nm) with three screws **(S)**

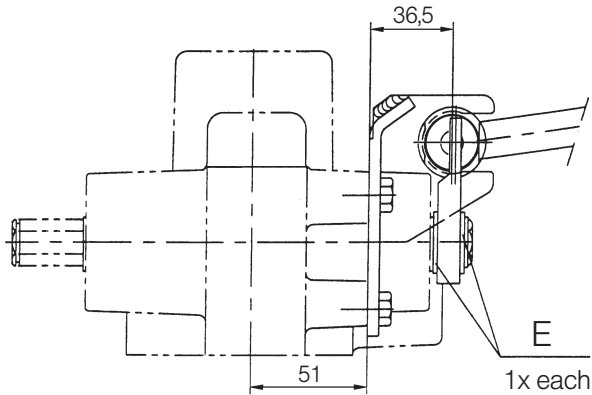


Type **RO*500**, technical revision 0

Mounting for types **RO*500** (technical revision 0)

(technical revision is indicated by the last position of the part no., see type plate)

- 2 distance plates (**E**, 2 mm each) should be pushed onto hand lever shaft (**H**) (**only on the left**, opposite hand lever) see figure.
- By the closed coupling a fit dog (**M**) is to be slipped over (angle approx. 30h, see figure)
- Safety ring (**R**) is to be fastened by means of the circlip pliers

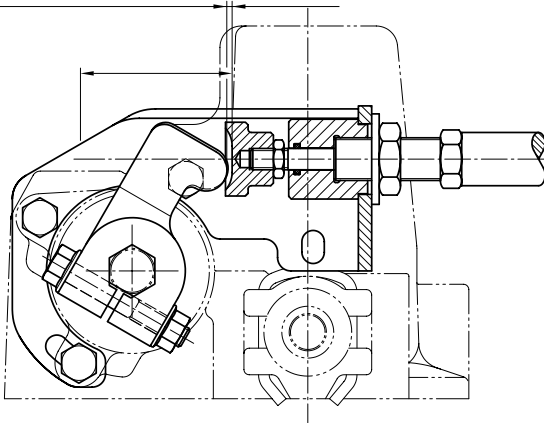


Types **RO*400, RO*430 RO*460,**
RO*500, RO*530 RO*560,
RO*500, (from technical revision 1 to 2)

Mounting for types **RO*400, RO*430, RO*460,** **RO*500** (from technical revision 1 to 2) **RO*530, RO*560**

- 1 distance plate (**E**, 2 mm) should be pushed onto hand lever shaft (**H**) (**only on the left**, opposite hand lever) see fig.
- By the closed coupling a fit dog (**M**) is to be slipped over (angle approx. 30°, see figure)
- 1 distance plate (**E**, 2 mm) should be pushed onto hand lever shaft (**H**)
- Safety ring (**R**) is to be fastened by means of the circlip pliers

2 mm admissible play
when coupling is locked

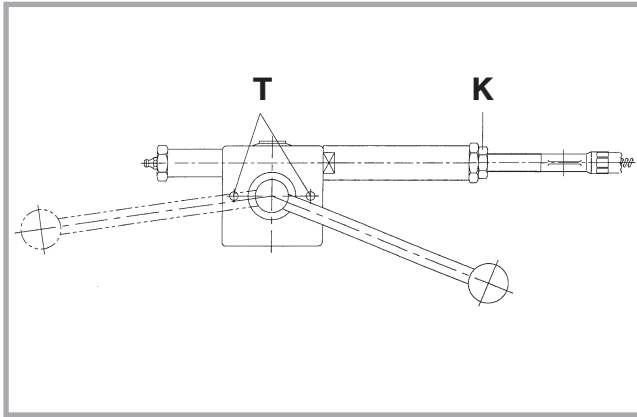


Type **RO*500**, (from technical revision 3)

Mounting for types RO*500

(from technical revision 3)

- By the closed coupling a fit dog (**M**) is to be slipped over (angle approx. 30° and bore in line with the groove of the hand lever shaft, see figure)
- Push the flange screw trough the borehole and fix it with the flange nut (**Torque 27 Nm**)



Caution:

If coupling and drawbar eye are tensioned relative to each other do not overload (20 kg max.) actuator lever and never force coupling open with mechanical aids.

Release any tension between coupling bolt and drawbar eye by moving vehicle either forwards or backwards.

In emergency open coupling with hand lever.

Further mounting procedure for all the types is the following:

- Slide Bowden line **(B)** into groove in mounting plate **(P)**
- Thread hexagon nut **(A)** onto stop of mounting plate **(P)** and hand-tighten
- Check that Bowden line operates smoothly.
If movement is all tight, twist Bowden line axially
- Tighten hexagon nut **(A)** (tightening torque 130 Nm)

Check: Spacing between dog **(M)** and thrust pad **(D)**

on Bowden line should be approx. 2 mm, adjust in case of wear:

- the fastening screw **(T)** should be bolted to the gearbox casing
- the lock nut is to be released **(K)**
- the bowden line hose should be firmly hold in its place and the transmission housing is to be rotated in such way that the admissible play of 2 mm can be achieved, when the coupling is locked (see figure)
- the lock nut should be tightened

Recommendation: Bowden cable should be at least half a year post-greased and the clearance between **(M)** and **(D)** is to be checked (s. fig.)

Please refer to leaflet 1260 for details of connecting remote indicator.



JOST-Werke · Siemensstr. 2, D-63263 Neu-Isenburg · Telefon +49 (0) 61 02 295-0 · Fax +49 (0) 61 02 295-298 · www.jost-world.com
ZDE 199 88 064-1-00 · 06/2006