

**Model RO★KU 80
with hole pattern U 6**



Installation and operating instructions must be carried in the truck



The coupling must be installed by authorised personnel!

Read these instructions carefully before installation!

Official note

When mounting the coupling, please observe EU Directive 94/20/EC especially Appendix VII, as well as the applicable national regulations.

When using according to ECE 55 Class T, Annex 5, Chap. 11 must be observed

Subject to technical changes without prior notice!

1. Mounting	14 – 15
1.1 Before installation	14
1.2 Installation of the towing bracket	14
1.3 Installation of the flange towing eye	14
1.4 Lubrication on initial installation	15
2. Operation	15 – 17
2.1 Hitching	15 – 16
2.2 Unhitching	17
3. Maintenance	18 – 19
3.1 Care / Lubrication	18
3.2 Inspection	18
3.3 Wear dimensions	19
4. Technical data	20 – 21
5. Checking the screw tightening torque	22



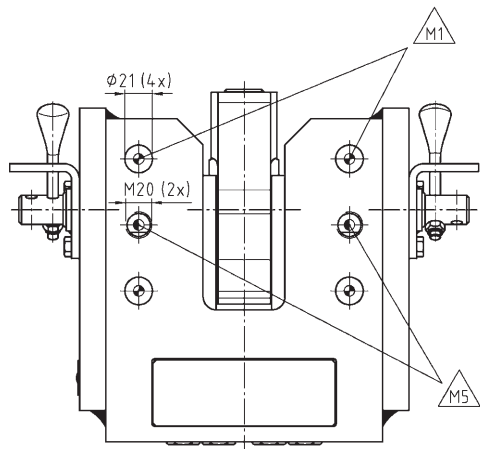


Fig. 1

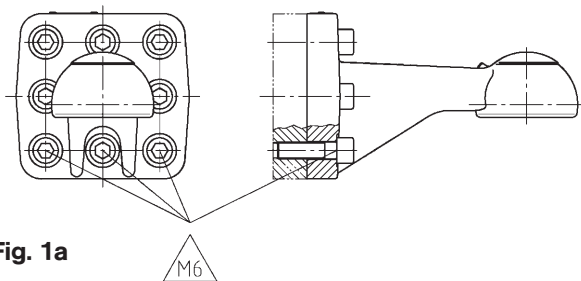


Fig. 1a

1.1 Before installation

Observe the mounting instructions of the vehicle manufacturer.

1.2 Installation of the towing bracket

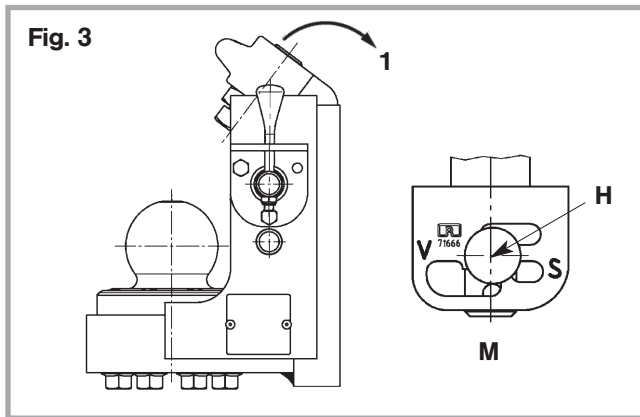
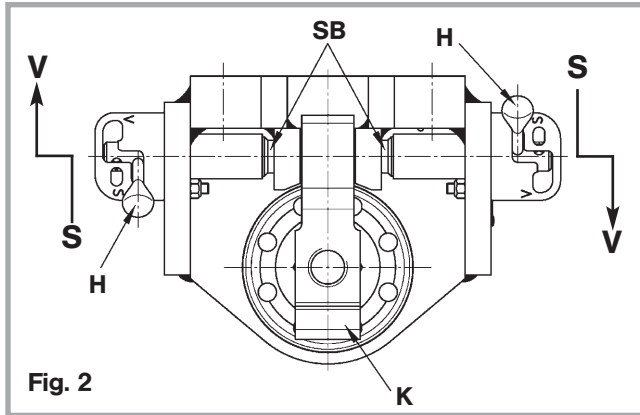
- The towing bracket should be bolted in front of the cross bar with 4 flange bolts M 20 x 1.5 x 85 lg – 10,9 (dacromet-coated + TTF) for coupling 908H61000 with 4 flange bolts M 20 x 1.5 x 110 lg – 10,9 (dacromet-coated + TTF) for coupling 908H61500 4 flange lock nuts M 20 x 1.5 – 10 (dacromet-coated + TTF) (lock nuts with metal stop) with a tightening torque **M1** of **600+20 Nm**

1.2.1 When additionally using the two M20 screw threads screws of quality 8.8 must be used with a tightening torque **M5** of **380+20 Nm**

1.3 Installation of the flange towing eye

- The flanged towing eye is bolted to the trailer drawing bar with 8 allen hex bolts M 20 x 70 lg – 10,9 (dacromet-coated + TTF). The tightening torque **M6** should be **560+20 Nm**.

Tightening torques must be recorded in chapter 5.



1.4 Lubrication on initial installation

- **Lubrication grease Class NLGI 3** must be applied to the coupled and secured drawing eye at the lubrication nipple **SN** provided until grease emerges out around the adjusting screw for the drawing eye (see also 3.1).

2.1 Hitching

- Turn both securing bolts with the handle **H** from locking position **S** to position **V** and pull.
- Pull the lever **K** on the handle upwards to the stop. The two locking bolts then swing from position **V** to position **M**.
- Move the towing truck back until the flanged towing eye moves over the ball to the stops provided in the towing bracket.
- Then lift the towing vehicle via the pneumatic suspension until the towing eye socket is completely over the ball.
- Pull the lever with the handle downwards until both locking bolts **SB** swing from position **M** to position **S**.

In this position the lever is doubly secured. (see fig. 3b)



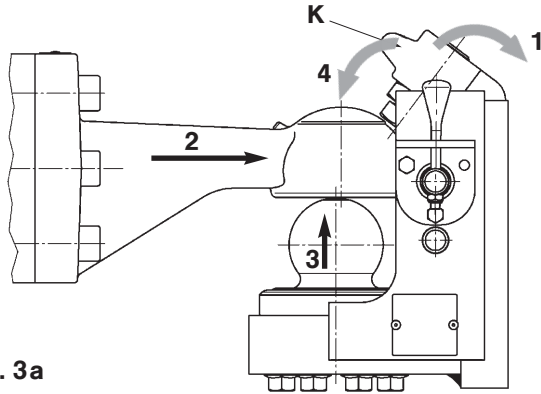


Fig. 3a

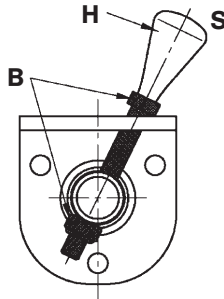
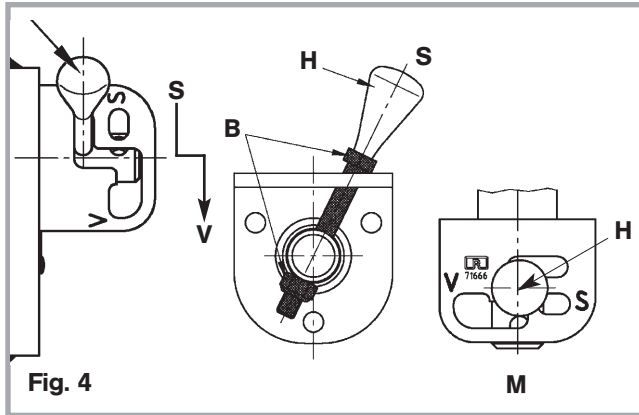


Fig. 3b

For security purposes the two locking bolts can be secured in this position against unauthorised opening with two shackles.

- Connect the supply lines.
- Set the support foot on the trailer in position.

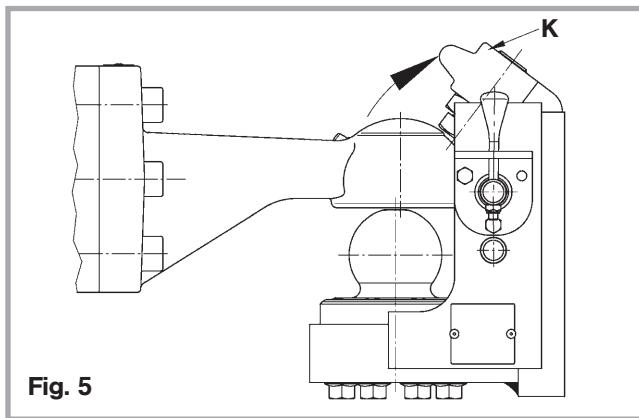
If the coupling is used according to ECE 55 Class T, the two locking bolts must be fixed with one screw each (B Fig. 3a) to the basis.



2.2 Unhitching

- Remove the locking devices **B** on the securing bolts. Remove the support foot on the trailer. Disconnect the supply lines
- Turn both locking bolts with the handle **H** from the locking position **S** to the position **V** and pull.
- Pull the lever **K** on the handle upwards to the stop. The two locking bolts swing from position **V** to position **M**.
- Lift the towing vehicle via the pneumatic suspension until the flanged towing eye is above the ball contour.
- Then drive the drawing vehicle away from the trailer.

The coupling is now ready for another hitching procedure.



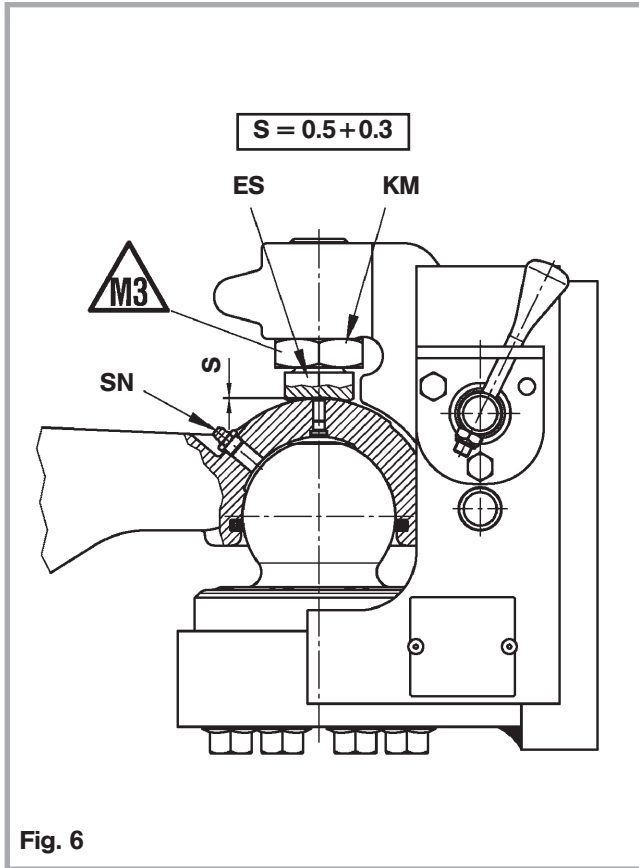


Fig. 6


3.1 Care / Lubrication

- Lubricate the towing eye at the lubricating nipple **SN** with lubricating grease class NLGI 3.
- The integrated gasket protects the surface of the ball against dirt.
- The patented internal contour has lubricant pockets reliefs to lubricate the contact surfaces every time the towing eye turns on the ball.

After cleaning the coupling with a water jet cleaner, the coupler eye and the lubrication nipple SN must be re-lubricated, until grease exits between the adjusting screw ES and the towing eye. The other bearing points must also be lubricated with a lubrication spray, for example with ROCKINGER lubrication spray ROE 96047.

- every **120.000** km all bearing points must be lubricated.

3.2 Inspection

- **After initial installation of the ball coupling system, the fastening bolts of the towing eye, the towing bracket and the ball flange must be inspected and, if required, tightened according Check Plan, Chapter 6.**
- The radial clearance between the ball socket and the ball should be set to **S = 0,5 + 0,3 mm**.
- The clearance can be adjusted with the aid of adjustment screw **ES**
 - To do this, adjust the adjustment screw until there is no air between the lever and the bearing points.
 - Then turn back the adjustment screw approx. $\frac{1}{2}$ of a turn and secure it with lock nut **KM**  of **300+25 Nm**

3.3 Wear dimensions

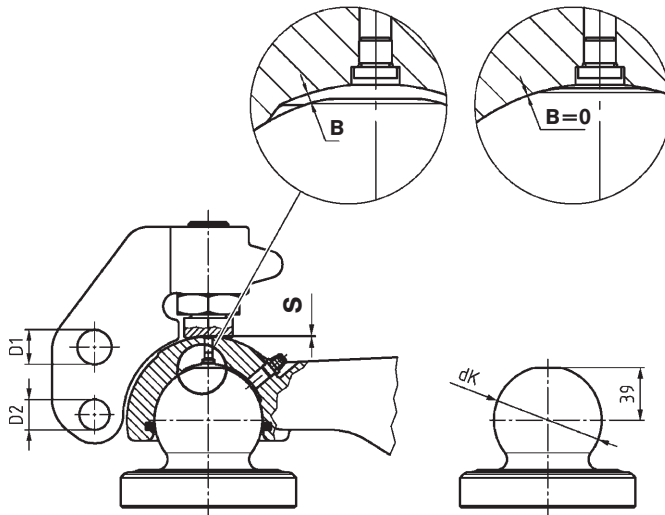
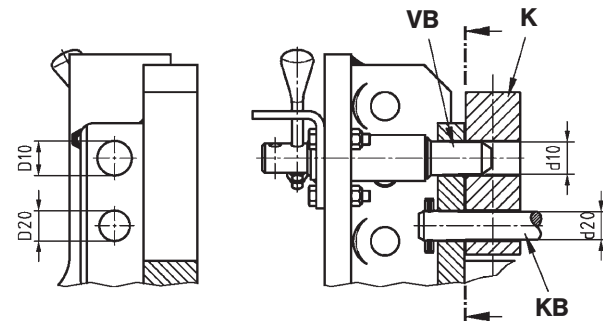
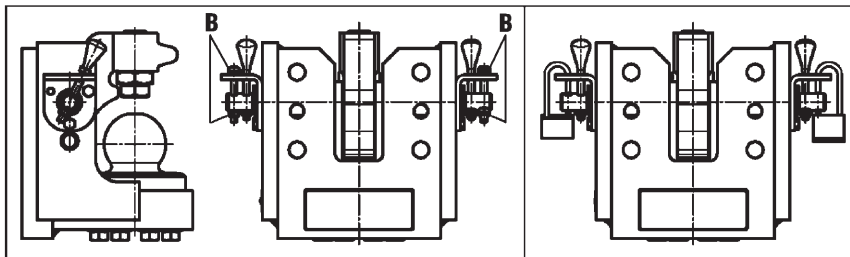
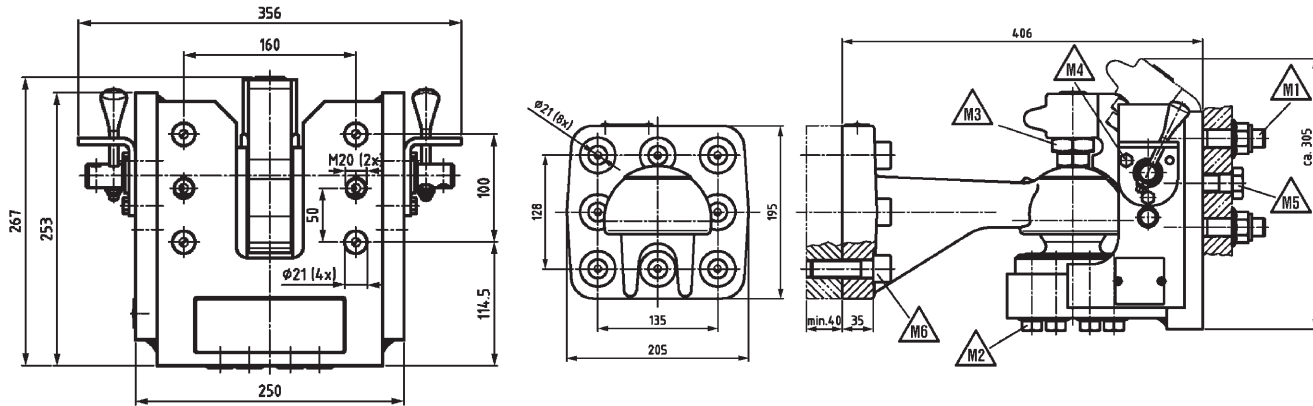


Fig. 7

Wear dimensions	
dk	ø 79,0
B	= 0 Replace towing eye
S	0.5+0.3 mm Readjust with adjustment screw ES
D1	ø 26,5
D2	ø 23,5
D10	ø 26,5
D20	ø 23,5
d10	ø 23,8
d20	ø 21,0

ø-datas in mm





ECE 55 Class T

EC 94/20 Class S


	Tightening Torque (Nm) (for $\mu = 0,12$)	Thread size (mm)
	600 + 20	M20x1,5-10.9
	365 + 25	M16 - 12.9
	300 + 25	M30 - 8.8
	25 + 3	M8 - 8.8
	380 + 20	M20 - 8.8 ¹⁾
	560 + 20	M20x1,5-10.9 ¹⁾

All screws tightened with torque wrench!
¹⁾ Nut thread material steel > 500 N/mm²

4. Technical Data

RO★KU 80

Article number RO...	Size	Hole pattern (mm)	Permissible D value (kN)	Permissible Dc value (kN)	Permissible stat. vertical load (kg)	Permissible V value (kN)	Weight (kg)
908H61000	EG 94/20/S U6	160x100	140	140	1000	90	65,4
					2500	75	
	ECE 55/T U6	160x100	-	140	1000	90	65,4
					2500	75	
908H61500	EG 94/20/S U6	160x100	140	140	1000	90	65,4
					2500	75	
	ECE 55/T U6	160x100	-	140	1000	90	65,4
					2500	75	

77641/0  Anhängerkupplung mit Kugel 80
u. Flansch Kugelzugöse 80

D 140 kN Dc 140 kN V 90 kN S 1000 kg
D 140 kN Dc 140 kN V 75 kN S 2500 kg

Typ **RO★KU80** Ausf. **U6**

e11 00-5779 Klasse **S**

E11 Dc 140 kN V 90 kN S 1000 kg
Dc 140 kN V 75 kN S 2500 kg

55R-01 5779 Klasse **T**

in Verbindung mit Rockinger Zugöse 57388
Art.Nr. 908H61000 Fab.Nr. 123456789

B A R C O D E

Towing eye pivoting angle:

- vertical ± 20 degree
- horizontal ± 90 degree
- axial rotation ± 25 degree



Tightening torque M1 + M2 + M5 + M6 (see chapter 4)

Truck – km	Intervall	Date	Workshop stamp	Signature by technician
	First installation			
	Installation km + 500 km			
	Installation km + 1.500 km			
	Installation km + 15.000 km			
	Installation km + 60.000 km			
	Installation km + 120.000 km			
	Installation km + 180.000 km			
	Installation km + 240.000 km			





ROCKINGER

JOST-Werke · Siemensstr. 2, D-63263 Neu-Isenburg · Telefon +49(0)61 02 2 95-0 · Fax +49(0)61 02 2 95-298 · www.jost-world.com

ZDE 199 88254-00-020 · 09/2007