



## BusLink

The innovative articulation pusher bus system – a new era of flexibility

# Innovation, experience and perfection

*JOST is a listed corporate group that has been a global leader in the production of safety-related systems, modules and components for commercial vehicles since its foundation in 1952.*

*JOST is characterised by high-quality, reliable and market-oriented products all over the world. With the BusLink articulation pusher bus system, the company is now also offering components for the bus industry for the first time.*

*JOST's BusLink articulation pusher bus system responds to the challenges posed by modern mobility – from electric and hydrogen buses to articulated buses with conventional engines. BusLink adapts to any OEM requirement, from the articulation design to the articulated turntable controller. Welcome to a new era of articulated flexibility.*

- The innovative JOST articulation pusher bus system BusLink optimises the driving stability of an articulated bus with rear-wheel drive.
- Customised complete system according to customer requirements from the articulation to the articulated turntable controller.
- Perfectly tailored to the complex requirements of the power cable management needs for electric buses and models using alternative drive concepts (buses with electric and hydrogen drives).
- Easy installation thanks to JOST patented welded construction with maximum ease of maintenance and service.
- As a world-leading producer and supplier of safety-critical systems for the commercial vehicle industry, JOST transfers decades of experience in welded constructions to the bus industry.

**Articulated turntable controller (ATC)**



**JOST bus articulation**



## Advantages of BusLink:

- As a system supplier, JOST offers the perfect integration of all components from a single source.
- The JOST articulated bus system BusLink can be adapted to all possible customer requirements.
- For example, the articulated turntable controller can be adapted to all possible customer driving requirements. The sensor data is configured in the controller together with the OEM.
- Slim, weight-optimised articulation design particularly suitable for electric bus applications.
- Integrated JOST ball bearing turntable technology, with which the JOST success story began in 1952.
- Reliable expertise in welded structures for the commercial vehicles industry.

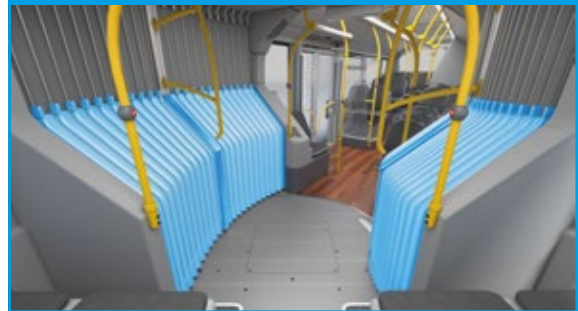
**Individually parameterisable articulated turntable controller (ACU) for best vehicle integration.** Developed by JOST, the controller records the vehicle sensor data and forwards the output parameters to the hydraulic proportional damper cylinder. This prevents uncontrolled articulation or jack-knifing of the vehicle. The articulated turntable controller also enhances safety during unconventional manoeuvres.



Particularly suitable for the requirements of electric buses.



Increased passenger safety due to the "gap free" solution of the inner bellows.



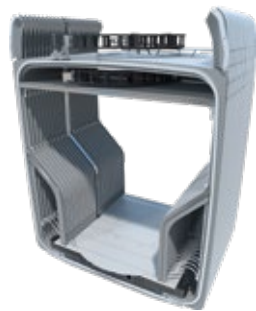
Ultra-responsive damper cylinder technology for premium driving performance and safety.



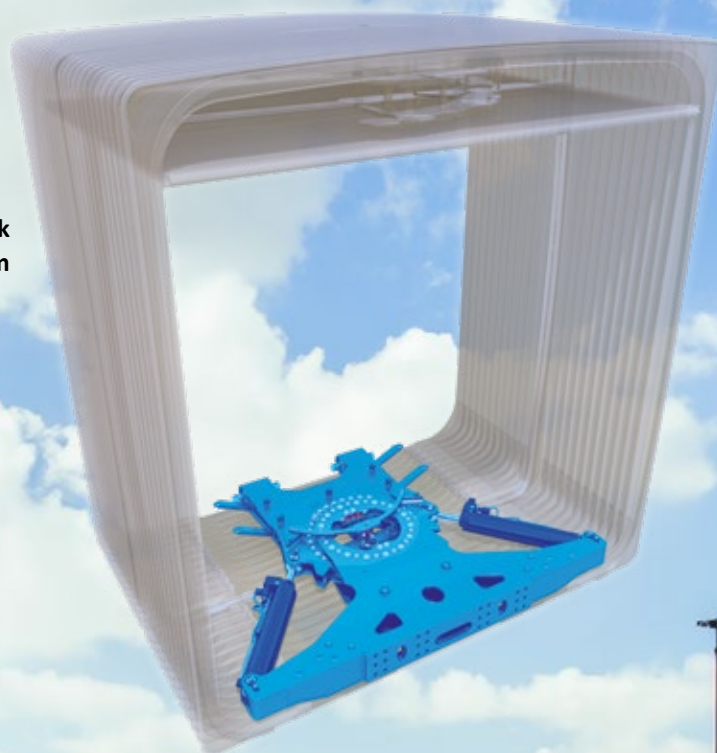
According to the customer's specifications, the energy guiding system with the cable equipment runs at the top, at the sides or centrally through the articulation.



Bellow



**BusLink  
complete system**



**JOST**

Member of **JOST** World



**Check it out  
on YouTube!**

**JOST**, Germany Tel. +49 6102 295-0, [jost-sales@jost-world.com](mailto:jost-sales@jost-world.com), [www.jost-world.com](http://www.jost-world.com)